

VALVE TESTING SERVICES

BHR has a range of large scale test facilities designed to support fluid device manufacturers in product development, testing and qualification or type approval of these safety critical devices. Our test facilities cover high pressure and high flow, extremes of temperature and full-size testing of components.

We provide test and qualification services for most types of flow devices and pressure containing envelopes, including valves and actuators, flowmeters, pumps and pipework.

For products and conditions outside the scope of our standard facilities, we can offer design and build of bespoke rigs to deliver a broader range of sizes, flow rates and pressures.

TESTING FACILITIES

BHR's facility includes a number of different flow loop rigs to satisfy a wide range of pressure / flow testing requirements. Our facilities can be used for product development, qualification testing / type approval and Factory Acceptance Testing (FAT).

We have a range of test facilities that can physically replicate the range of on-site working and environmental conditions. We use these in the modelling and understanding of flow assurance, thermal management, fluid power, high pressure and high temperature requirements for determining the integrity of engineered systems in a controlled laboratory environment.

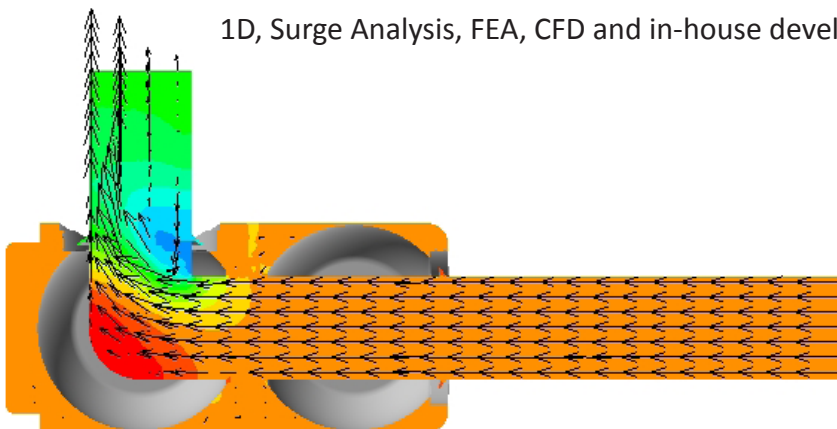
All this is augmented with computer aided design tools that simulate the physical and chemical behaviour of fluids in critical hydraulic, cooling or control systems and equipment.

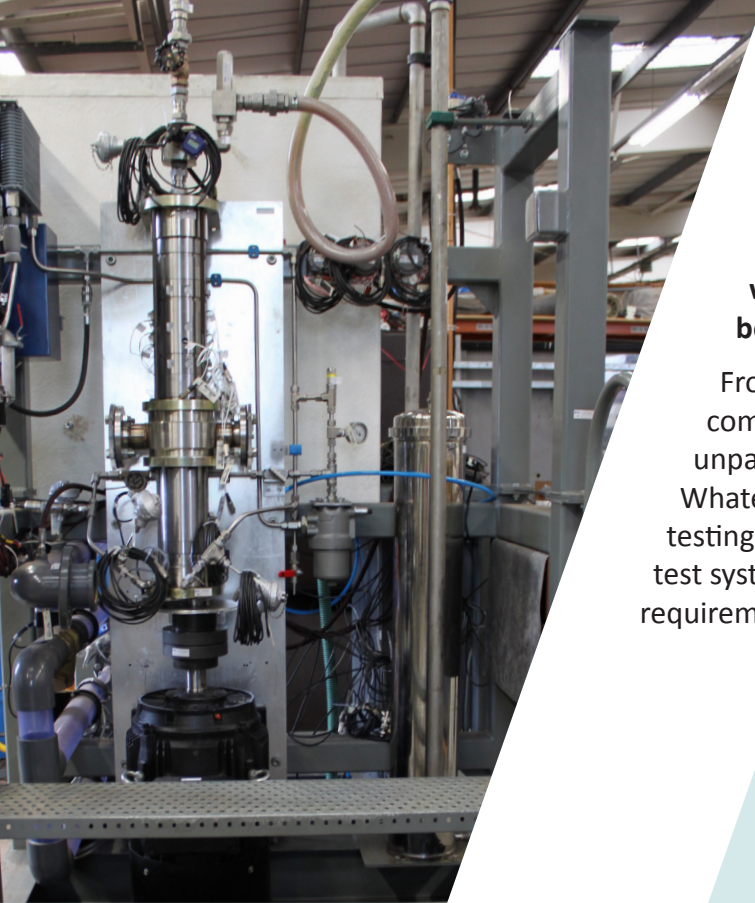
Physical Testing

Rigs with large flow and pressure range for water and air

Numerical Modelling

1D, Surge Analysis, FEA, CFD and in-house developed models





BESPOKE TEST DEVELOPMENT

BHR specialises in bespoke test rig development with full instrumentation and data acquisition for both liquid and gas applications.

From design (P&IDs, drawings) through build, commission and test, our engineering team has unparalleled expertise in test design and specification. Whatever your requirements for valve and actuator testing, BHR has the expertise to design and execute test systems to meet your pressure / flow testing requirements.

- Test Facility Design
- Calculation of design parameters
- P&ID
- Engineering drawings
- Specification & identification of components suppliers
- Environmental Health & Safety considerations

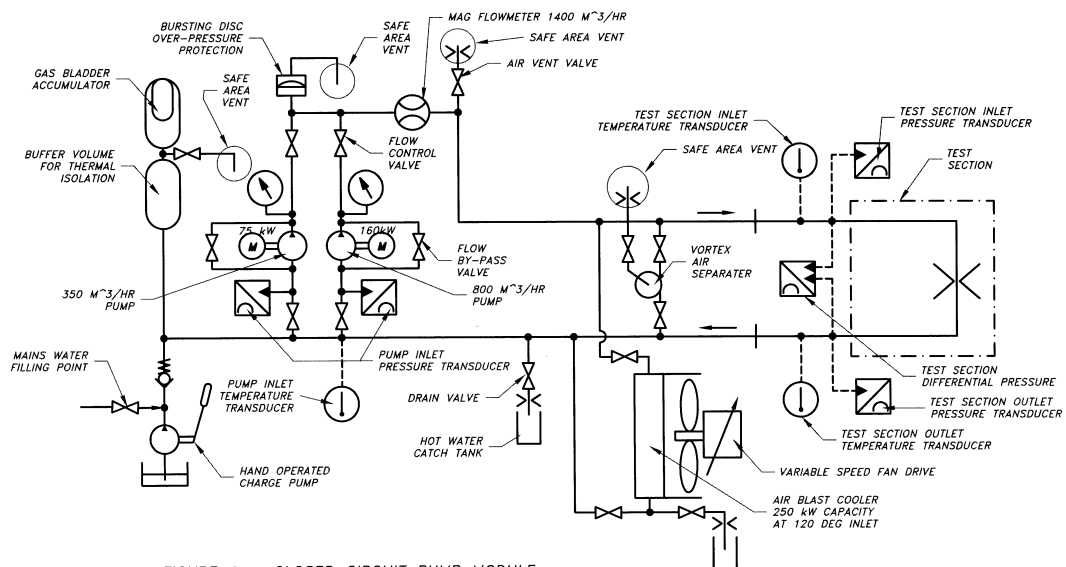


FIGURE 1 – CLOSED CIRCUIT PUMP MODULE

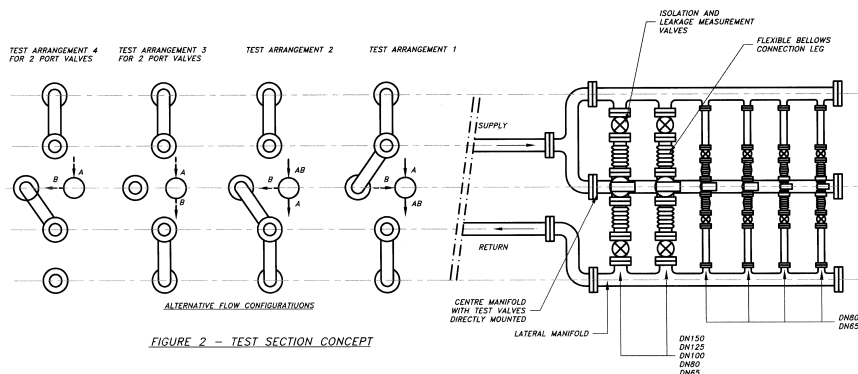


FIGURE 2 – TEST SECTION CONCEPT